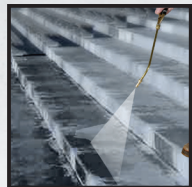


CHAPIN®

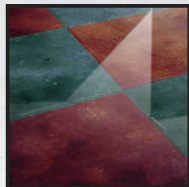
INDUSTRIAL CONCRETE SPRAYER



19049 | 3.5 GALLON XTREME™ INDUSTRIAL CONCRETE SPRAYER



Sealing



Curing



Form Oils

- Resistant to the most Extreme chemicals and high concentrations of Acetone®
- Exclusive TRI-POXY lined steel for triple protection against corrosion, rust and damage from denting.
- Wide Mouth for easy filling and cleaning
- Brass fan nozzle for even coverage (includes .5 GPM and 1.0) GPM nozzles)
- Brass spray handle with “Lock-on” and quick release design. Threaded coupling for easy removal.
- Xtreme™ chemical resistant hose reinforced with nylon braid.



6-5378

Optional Xtreme™ Conversion Kit

Includes:
Hose, Seals, &
Bottom Valve



SKU	Description	UPC (0-23883)	Pack Qty	Carton Dimensions in. (LxWxH)	Carton ft³	Weight lb.	Pallet Size in	Pallet ft³	Pallet Qty
19049	XTREME™ Industrial Sprayer - 3.5 Gallon	19049-1	1	9 x 9 x 28	1.3	11.75	48 x 48	64	41



1-800-950-4458 | Fax 1-800-944-4329 | chapinmfg.com

Chapin International, Inc. PO Box 549 Batavia, NY 14021-0549 USA