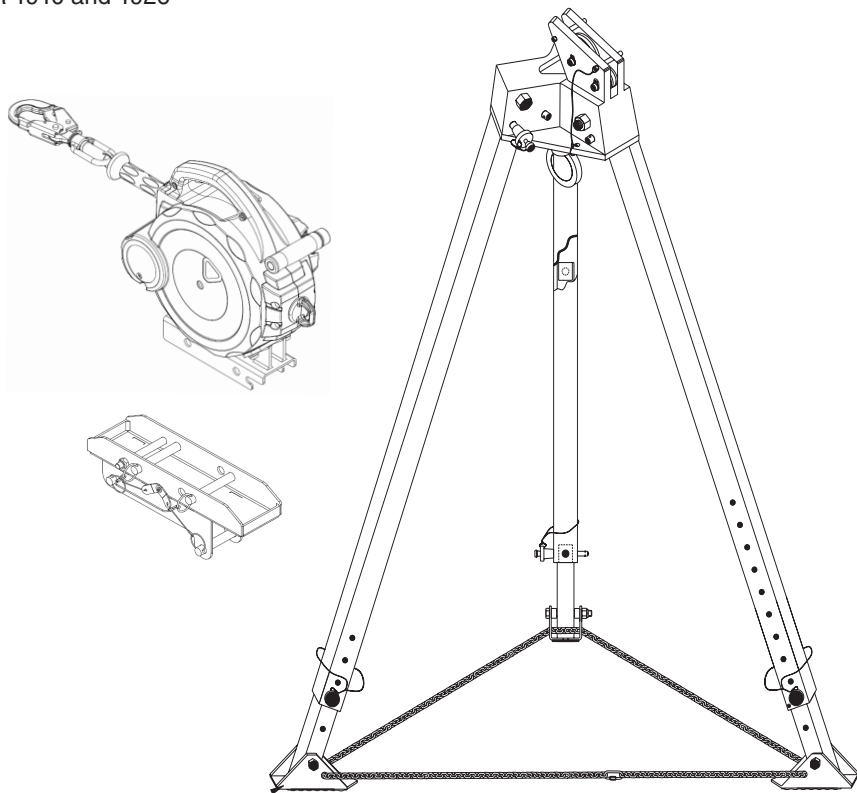




USER INSTRUCTIONS

TRIPOD SYSTEM

Complies with ANSI Z359.18-2017 (Type A), ANSI Z359.14-2021 standards and OSHA 29 CFR 1910 and 1926



User Instruction Manual for T700000XR, T100108, T410060, T100008B, and T200007.

WARNING!

*Compliant fall protection equipment must only be used as it was designed and adhere to the hierarchy of controls as discussed in ANSI Z359.2. Users **MUST** read and follow all user instructions provided with the product. Before using a fall arrest system, users must be trained in the safe use of the system, as required by OSHA 29 CFR 1910.30 and 1926.503, or local safety regulations. **Misuse or failure to heed these warnings and instructions may result in injury or even death.***

WORK SAFE! WORK SMART!

IF YOU HAVE ANY QUESTIONS ABOUT THE PROPER USE OF THE EQUIPMENT, SEE YOUR SUPERVISOR, USER INSTRUCTIONS, OR CONTACT WERNERCO FOR MORE INFORMATION.

GENERAL SAFETY INFORMATION

These User Instructions are not to be removed except by the user of this equipment. Current User Instructions must always be available to the user.

WARNING!

1. *Failure to follow all instructions and limitations on the use of 3-Way Self-Retracting Lifeline with Rescue(3-Way SRL-R) or Tripod System may result in serious personal injury or death.*
2. *Minors, pregnant women and anyone with a history of either back or neck problems should not use this equipment.*
3. *Do not use or install equipment without proper training from a "competent person" as defined by OSHA 29 CFR 1926.32(f).*
4. *3-Way SRL-R's are designed for a single user.*
5. *The Tripod System is designed for up to two users at one time for emergency rescue applications only.*
6. *Not all fall protection and rescue components are rated for the same user weight capacity. Only use components rated for the same weight capacity.*
7. *Do not use combinations of components or subsystems, or both, that may affect or interfere with the safe function of each other.*
8. *Caution must be taken when using 3-Way SRL-R and Tripod System near moving machinery, electrical hazards, sharp edges, or abrasive surfaces. Contact with these elements may cause equipment failure, personal injury, or death.*
9. *Personal fall arrest systems, including 3-Way SRL-R and Tripod System, must be inspected prior to each use for wear, damage and other deterioration. Defective components must be immediately removed from service in accordance with the requirements of OSHA 29 CFR 1910.140 and 1926.502.*
10. *Do not use the Tripod without the safety chain, or without safety chain properly adjusted.*
11. *Do not use the Tripod System with more systems than the number permitted.*
12. *Shoulder D-rings on the full body harness are for rescue and entry/retrieval applications only. Always use both shoulder D-rings together simultaneously.*
13. *Do not expose equipment to chemicals, high heat, severe cold or other harsh environments which may produce a harmful effect. The 3-Way SRL-R and Tripod System are designed to be used in temperatures ranging from -40°F to +130°F (-40°C to +54°C).*
14. *Remove any surface contamination such as concrete, stucco, roofing material, etc., that could accelerate cutting or abrasion of attached components.*
15. *Avoid using 3-Way SRL-R in applications where engulfment hazards exist.*
16. *Do not use if inspection reveals any defect, wear, damage, deterioration, inadequate maintenance, or unsafe condition. Do not use any equipment that has been subjected to the forces of arresting a fall or if any part of the load indicator warning is showing.*
17. *Only anchor at or above the dorsal D-ring on the users full body harness.*
18. *Any equipment that has been subjected to the forces of arresting a fall, or that has a deployed load indicator, must be removed from service until a "competent person" can determine the need for authorized repair or disposal.*
19. *The 3-Way SRL-R is not suitable for leading edge applications.*
20. *Only WernerCo, or persons or entities authorized in writing by WernerCo, shall make repairs or alterations to the equipment.*
21. *Alterations or misuse may result in serious personal injury or death.*

CAUTION!

If a 3-Way SRL-R is used in conjunction with a cross-arm strap anchorage connector, other anchorage extension, horizontal lifeline, or extended D-ring, the additional length of the anchorage connector, extended D-ring, or sag from the lifeline must be taken into consideration during the clearance calculation process.

USE INSTRUCTIONS AND LIMITATIONS

IMPORTANT

Before use, the user must read and understand these User Instructions. Keep these User Instructions for reference.

PURPOSE

The Tripod System and 3-Way SRL-R are designed to be used as part of a personal fall arrest, rescue, rope descent, rope access, suspension, rescue, or material handling system.

USE INSTRUCTIONS

1. Failure to follow all instructions and limitations on the use of the equipment may result in serious personal injury or death.
2. Before using, employees must be trained in accordance with all applicable OSHA requirements in the safe use of the system and its components.
3. Personal protection systems must be inspected prior to each use for wear, damage, and other deterioration. Defective components must be immediately removed from service, in accordance with OSHA requirements.
4. The complete system must be planned (including all components, calculating fall clearance, swing fall, and rescue) before using.
5. Users must have a rescue plan, and the means to implement it, that provides for the prompt rescue of employees in the event of a fall, or assures that employees are able to rescue themselves.
6. Store the equipment in a cool, dry, clean environment and out of direct sunlight when not in use.
7. After a fall or rescue occurs with the system, immediately remove from service until a "competent person" can make the determination for reuse or disposal.
8. Werner Co. will provide design information upon request.
9. Field serviceability testing is not required and is not recommended to be performed by the user.

USE LIMITATIONS

The Tripod has been tested in compliance with the requirements of ANSI/ASSE Z359.7. Compliance and testing covers only the hardware and does not extend to the anchorage and substrate supporting the tripod.

1. **TRIPOD CAPACITY:** The Tripod has a minimum breaking strength of 5000 pounds (22.2 kN) and is designed for a single user. The Tripod can be used for two users at one time for emergency rescue applications. The user weight will be determined by the equipment connected to the Tripod System. Refer to User Instructions of associated equipment for the user capacity.
2. **3-WAY SRL-R CAPACITY:** The 3-Way SRL-R is designed for users with a capacity (including clothing, tools, etc.) up to 400 lb (181 kg) total working weight.

WARNING!

Not all fall protection and rescue components are rated for the same user weight capacity. Only use components rated for the same weight capacity.

3. **MATERIALS:** The Tripod System is made from aluminum alloy, stainless steel, steel and rubber. The 3-Way SRL-R is made from aluminum, galvanized steel wire rope, and steel.
4. **CONNECTIONS:** Connection to the tripod system can be made:
 - a) to one of the integral Eye Bolt anchorage connectors underneath the head of the tripod,
 - b) to the Mounting Bracket on a tripod leg in-line with the head pulley on top of the tripod,
 - c) to the Mounting Bracket on a tripod leg, not inline with the head pulley, and using the carabiner and pulley to support the cable.
5. **CONFIGURATIONS:** The Tripod System can be configured for:

WARNING!

Do not use the Tripod System with more systems than the number permitted.

- One Person: for a single user, connections can be made using connection methods; 4(a) and any compliant fall arrest system, 4(b) or 4(c) using the 3-Way SRL-R.
- Suspension: a single user can attach a compliant rope descent, rope access, pulley system,

or other compliant suspension system to connection 4(a). For fall arrest, a compliant system can be attached to the other 4(a) connection or connections 4(b) or 4(c) can be used with the 3-Way SRL-R.

- Two Person: the Tripod System shall not be used for two people except during rescue or emergency situations. Connections 4(a), 4(b) and 4(c) can be used.
- 6. **MULTIPLE SYSTEMS:** Multiple systems may be attached to the Tripod; however, the Tripod is for a single user only. A maximum of two systems may be attached to one Tripod, and a maximum of one system may be attached to any one Tripod leg.
- 7. **SUBSYSTEMS:** Only connecting subsystems that limit the maximum arrest force to less than 1,800 pounds (8 kN) may be used with the Tripod.
- 8. **COMPONENT COMPATIBILITY:** Only components approved by Werner Co. may be used with the equipment.
- 9. **CORROSION:** Do not leave the equipment in environments where corrosion of metal parts could take place as a result of vapors from organic materials. Use near seawater or other corrosive environments may require more frequent inspections to ensure corrosion damage is not affecting the performance of the product.
- 10. **CHEMICAL HAZARDS:** Solutions containing acids, alkali, or other caustic chemicals, especially at elevated temperatures, may cause damage to the equipment. When working with such chemicals, frequent inspection of this equipment must be performed. Contact Werner Co. with any questions concerning the use of the Tripod System around chemical hazards.
- 11. **EXTREME TEMPERATURE:** The Tripod System is designed to be used in temperatures ranging from -40°F to +130°F (-40°C to +54°C). Protection should be provided when used near welding, metal cutting or similar activities. Contact Werner Co. with any questions concerning high temperature environments.
- 12. **ELECTRICAL HAZARDS:** Use extreme caution when working near high voltage power lines due to the possibility of electric current flowing through the equipment or connecting components.
- 13. **LOADING:** The Tripod must only be loaded downward, within the radius of the tripod. Loading in any other direction may cause the tripod to tip over.
- 14. **LEG CONNECTIONS:** Only one system may be attached to any one Tripod leg.
- 15. **SURROUNDINGS:** The area surrounding and within the Tripod System must be kept clear to allow for unrestricted movements in, through and around the tripod for work and rescue applications. The tripod requires the surroundings to have a minimum height of 60 inches (1.5 m) for installation.
- 16. **OPENINGS:** The Tripod System can be installed around openings from 22 - 42 inches (0.56 - 1.1 m) in diameter. The tripod must always be extended to the maximum height possible in the surroundings. The tripod legs must be secured with the chain and the tripod must be prevented from being dislodged.
- 17. **RESCUE:** A rescue plan must be developed for each application where the Tripod System is used that determines the most appropriate way to receive the individual when retrieved to the upper elevation according to their condition, surroundings, harness connection and method.
- 18. **REPAIRS / ALTERATIONS:** Only Werner Co., or persons or entities authorized in writing by Werner Co., may make repairs or alterations.

ANCHORAGE REQUIREMENTS

ANCHORAGES

All anchorages for the Tripod System and 3-Way SRL-R must meet the requirements of ANSI Z359.2 and OSHA 29 CFR 1910.140 and 1926.502. The Tripod and 3-Way SRL-R must only be used on structures capable of supporting loads applied in all directions permitted by the fall arrest system of at least:

- A) no less than 5,000 pounds (22.2 kN) for non-certified anchorages; or
- B) at least two times the maximum arresting force for certified anchorages;
- C) according to ANSI Z359.6, *Specifications and Design Requirements for Active Fall Protection Systems*.

When more than one personal fall arrest system is attached to the anchorage, the strength in (A) or (B) must be multiplied by the number of personal fall arrest systems attached to the anchorage.

OSHA states:
Anchorage used for attachment of personal fall arrest equipment shall be independent of any anchorage being used to support or suspend platforms and capable of supporting at least 5,000 pounds (22.2 kN) per employee attached, or shall be designed, installed, and used as part of a complete personal fall arrest system which maintains a safety factor of at least two; and under the supervision of a “qualified” person.

Anchorage for the Tripod must be flat without any surface contaminants or foreign objects or equipment in the surrounding area that may move, slide, roll or adversely affect the stability and ability of the tripod to function.

ANCHORAGE CONNECTORS

Anchorage connectors function as an interface between the anchorage and the personal fall arrest system, for the purpose of coupling the system to the anchorage. The Tripod is the anchorage connector and is designed to meet a 5,000 pound tensile load when statically tested in accordance with the requirements of the ANSI Z359.18-2017 standard.

CONNECTION REQUIREMENTS

COMPATIBILITY LIMITATIONS

All connecting subsystems must only be coupled to compatible connectors. OSHA prohibits snap hooks from being engaged to certain objects unless two requirements are met: snap hook must be a locking type and must be "designed for" making such a connection. Under OSHA "designed for" means that the manufacturer of the snap hook specifically designed the snap hook to be used to connect to the equipment in question.

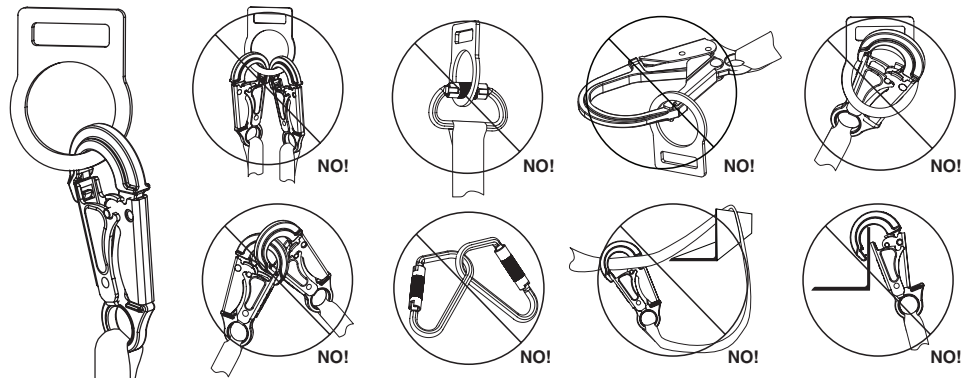
The following connections must be avoided, because they can result in rollout* when a non locking snap hook is used:

- Direct connection of a snap hook to horizontal lifeline.
- Two (or more) snap hooks connected to one D-ring.
- Two snap hooks connected to each other.
- A snap hook connected back on its integral lanyard.
- A snap hook connected to a webbing loop or webbing lanyard.
- Improper dimensions of the D-ring, rebar, or other connection point in relation to the snap hook dimensions that would allow the snap hook keeper to be depressed by a turning motion of the snap hook.

***Rollout:** A process by which a snap hook or carabiner unintentionally disengages from another connector or object to which it is coupled.

**COMPATIBLE
CONNECTION**

INCOMPATIBLE CONNECTIONS



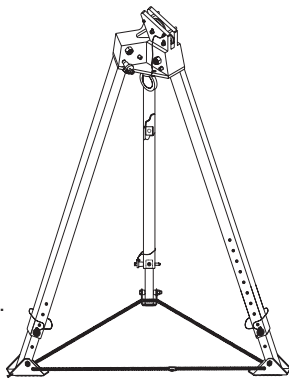
SYSTEM COMPONENTS

COMPATIBILITY LIMITATIONS

All components and subsystems used with the Tripod System have been tested as part of a complete system. Only components and subsystems approved by Werner Co. are to be used with the Tripod System.

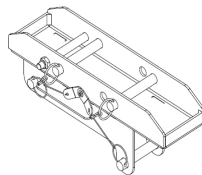
TRIPOD: T100108

The Tripod extends from 58 inches (1.5 m) to 97 inches (2.5 m) for installation over openings with a maximum diameter of 22 inches (.5 m) at lowest height to a diameter up to 42 inches (1 m) at tallest height. The Tripod adjusts in 3 inch (8 cm) increments. The head of the Tripod includes two $\frac{5}{8}$ inch (1.5 cm) forged steel Eye Bolt anchorage connectors. The Eye Bolts are for direct connection of fall arrest, suspension and rescue subsystems. The feet have rubber skid pads and a safety chain to help prevent the legs from spreading apart.



TRIPOD MOUNTING BRACKET: T100008B

The steel Mounting Bracket attaches to any leg of the tripod to mount the 3-Way SRL-R.



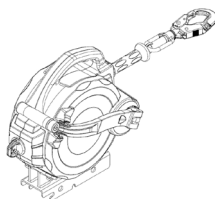
PULLEY: T200007

The aluminium alloy Pulley is designed for use with up to a $\frac{7}{16}$ inch (12 mm) diameter steel cable. The Pulley has an 8,100 pound (36 kN) tensile breaking strength.



3-WAY SELF RETRACTING LIFELINE WITH RESCUE CAPABILITY: T410060

The 3-Way Self Retracting Lifeline with Rescue Capability (3-Way SRL-R) is designed for a single user with a capacity between 130 (59 kg) and 310 (140 kg) pounds including clothing, tools, etc, and is 60 feet in length. For rescue, the 3-Way SRL-R has a capacity of two users with a maximum weight of 620 pounds (280 kg). The 3-Way SRL-R has an aluminum housing, galvanized steel cable, swivelling steel connecting snap hook, and integral steel mounting bracket. When dynamically tested in accordance with the requirements of the ANSI Z359.14 standard for Class 1 for SRLs, the 3-Way SRL-R has an average arrest force of less than 900 pounds (4 kN) and a maximum arrest distance less than 42 inches (1 m). The 3-Way SRL-R has a lifting ratio of 6.5:1.



INSTALLATION

BEFORE EACH USE

WARNING!

Before using a personal fall arrest system, employees must be trained in accordance with the requirements of OSHA 29 CFR 1910.30 and 1926.503 and/or applicable local, state, governmental and jurisdictional agencies, in the safe use of the system and its components.

Personal fall arrest systems, including SRL's, must be inspected prior to each use for wear, damage, and other deterioration. Defective components must be immediately removed from service in accordance with the requirements of OSHA 29 CFR 1910.140 and 1926.502 and/or applicable local governmental and jurisdictional standards.

Users must have a rescue plan, and the means to implement it, that provides for the prompt rescue of employees in the event of a fall or assures that employees are able to rescue themselves.

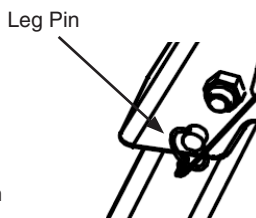
The user must read and understand these user instructions, as well as the user instructions for every component and subsystem of the Tripod system. The entire Tripod System, and its subsystems, must be inspected prior to each installation. See INSPECTION.

Check the operation by pulling smoothly on the lifeline, then pulling sharply on the lifeline to engage the locking mechanism. SRL's must be inspected prior to each use. See INSPECTION.

The Tripod System must be mounted on a flat, stable surface for each leg. The Tripod System must be installed in such a manner that it will remain stable for the duration of use and the feet cannot move, slide, lift, or have any foreign influence move the Tripod System into the opening.

ASSEMBLE TRIPOD

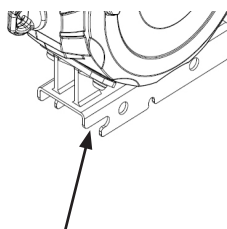
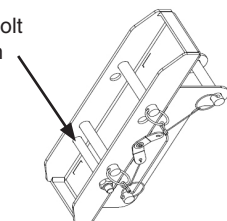
1. Lay the Tripod flat on the ground and remove the leg pins from the head of the Tripod.
2. Stand the Tripod up, support it, and pull each leg outward, so the Tripod supports itself.
3. For each leg, insert the locking pins through the holes in the Tripod head and leg and secure.
4. Extend each Tripod leg to the desired height and secure each leg with the pin. Each leg must be secured with the locking pin.
5. Insert the chain through the opening at the bottom of each tripod leg. The chain must go through all three legs and be inside the legs of the Tripod.
6. Pull slack out of the chain and connect the chain clip into a chain link to keep the chain taut.



ATTACH MOUNTING BRACKET

1. The Mounting Bracket is used to mount the 3-Way SRL-R to a tripod leg.
2. Select which leg to install the bracket on. The mounting bracket attaches to the upper section of any leg of the Tripod. For legs that do not have the Tripod head pulley, a carabiner and pulley will be needed to re-direct the cable down the center of the Tripod using the eye-bolt anchor.
3. Orient the bracket so the integral bolt that the SRL-R connects to is on the bottom of the bracket.
4. Align the bracket holes with the leg holes and insert the two pins through the bracket, upper, and lower leg holes of the Tripod. Secure the pins.
5. Confirm that the two connecting pins go through both legs and the bracket holes and are secured in place.

Integral Bolt
on bottom



MOUNT 3-WAY SRL-R

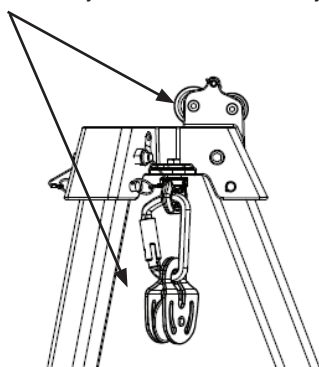
1. Orient the 3-Way SRL-R so the cable comes out on the top of the unit and the integral bracket aligns with the tripod leg mounting bracket.
2. The 3-Way SRL-R has an integral bracket, mated with the holes on the mounting bracket. Align the holes on the housing bracket with the leg bracket and insert the two pins through the holes.
3. Secure the pins.

Integral Bracket
connects to
Mounting Bracket

RE-DIRECT CABLE

1. Re-direct the cable down the center of the tripod using one of the following pulleys:
 - 1.1 Tripod Head Pulley: remove the pin on the head pulley and feed the cable into the sheave on the head pulley. Return the pin to the hole and secure the spring clip holding the cable in place.
 - 1.2 Carabiner and Pulley: open the side plates of the pulley and feed the cable in between the side plates into the sheave. Close the side plates and install the carabiner through both side plates. Install the carabiner on the Eye Bolt anchorage that lines up with the pulley leg.
2. Repeat these steps if a second unit is being mounted to the Tripod.

Direct the cable through the Tripod Head Pulley or Carabiner and Pulley



CONNECTIONS

WARNING!

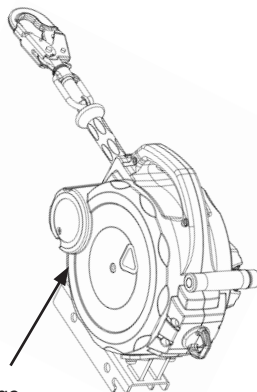
Never attach an additional energy absorbing lanyard, self retracting lifeline, or similar component to lengthen the lifeline.

WARNING!

Only anchor SRL-R at or above the dorsal D-ring on the users full body harness.

3-WAY SRL-R FOR FALL ARREST ANCHORED TO THE TRIPOD

1. The 3-Way SRL-R is designed for one user at one time between 130-310 pounds (59-140 kg) total working weight per user.
2. With the 3-Way SRL-R installed on the Tripod, begin using it with the rescue option disengaged. The cable should extend and retract as it is pulled in and out.
3. Connect the 3-Way SRL-R snap hook into the dorsal D-ring of the full body harness.
4. If the rescue option is needed, press the engagement button on the side of the housing, pulling the handle away from the housing from the center, and rotate the handle into the operating position.
5. Use the handle to lift and lower as necessary to facilitate the rescue.



3-WAY SRL-R HARNESS CONNECTIONS FOR RESCUE APPLICATIONS

WARNING!

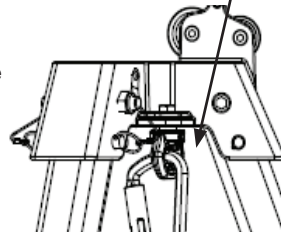
Never allow slack in cable while in rescue mode.

1. The 3-Way SRL-R may be connected in multiple ways for rescue applications. The 3-Way SRL connection to the dorsal D-ring of the full body harness for fall arrest may be used for rescue.
2. The 3-Way SRL-R may attach to the Class L, sternal (front), D-ring of the full body harness for a user in need of rescue. See full body harness user instructions for more information.
3. The 3-Way SRL-R may attach to the T410000 Retrieval Yoke in rescue applications. The retrieval yoke connects to Class E, shoulder, D-rings on the full body harness of a user in need of rescue. See full body harness user instructions for more information.

EYE BOLT ANCHORAGE CONNECTION

1. The Eye Bolt anchorage connectors can be used with compliant fall arrest systems.
2. The direction of loading of all fall protection systems attached to the Tripod must be downward, vertical, and remain within the legs of the tripod. Any side load or loading outside of the legs may result in failure of the Tripod.
3. Only one system and connection can be made into each Eye Bolt and only one fall arrest system can be attached at one time.
4. Self-retracting Lifelines, Vertical Lifelines, Lanyards, Rope Descent and Rope Access systems may be attached to the Eye Bolts.
5. See user instructions supplied with all systems used on the Eye Bolts.

Eye Bolt Anchorage



3-WAY SRL-R TO EYE-BOLT OR OTHER OVERHEAD ANCHORAGE

1. Connect the 3-Way SRL-R to an overhead anchorage using the supplied carabiner.
2. Ensure the 3-Way SRL-R is in fall arrest mode where the cable pays out and retracts and the rescue handle is not engaged.
3. Check the operation by pulling smoothly on the lifeline, then pulling sharply on the lifeline to engage the locking mechanism.
4. Connect the 3-Way SRL-R snap hook into the dorsal D-ring of the harness.
5. Applications where the 3-Way SRL-R is used with an overhead horizontal lifeline, all components must be compatible. Both the horizontal lifeline and 3-Way SRL-R clearance distances are required for clearance calculations. Horizontal systems must be designed and installed under the supervision of a qualified person. The 3-Way SRL-R is suitable for use with horizontal lifelines, and deforming or flexible anchorages.

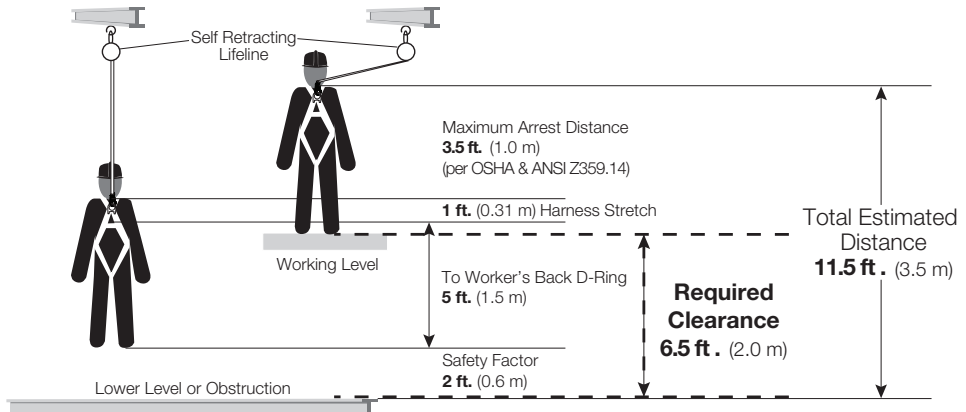
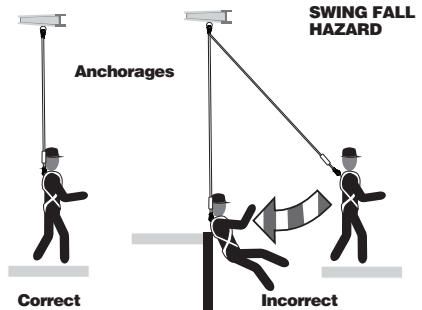


WARNING!

Striking objects horizontally due to the pendulum effect of a swing fall may cause serious injury or death.

SWING FALLS & CLEARANCE

To minimize the possibility of a swing fall or striking the ground, anchor as directly above the work area as possible. Striking objects horizontally, due to the pendulum effect, may cause serious injury. Swing falls also increase the vertical fall distance of a worker, compared to a fall directly below the anchorage connector. Swing falls may be reduced by using overhead anchorage connectors that move with the worker.

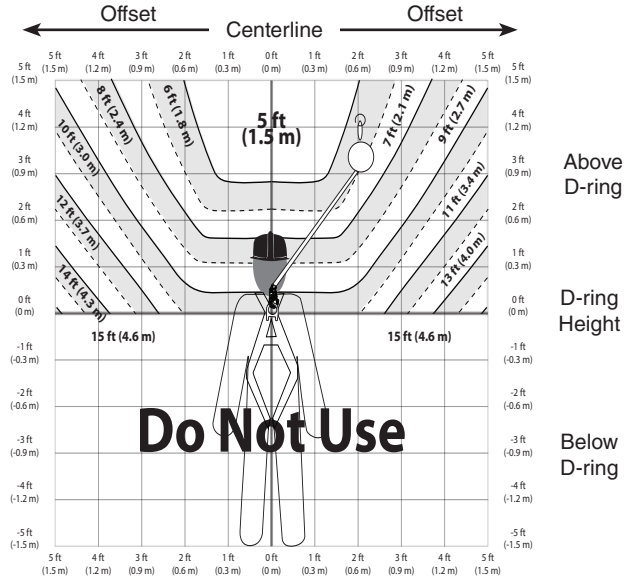


3-WAY SRL-R OFFSET CLEARANCE REQUIREMENTS (EYE BOLT AND OVERHEAD ANCHORAGES OTHER THAN TRIPOD)

EXAMPLE: With the 3-Way SRL-R anchored 4 feet above the user's D-ring and the user works 2 feet away (offset) from directly overhead (centerline), the required clearance is 6 feet (1.8 m) from the working level to the nearest obstruction below.

The required clearance includes; Free Fall and Swing Fall Distance, Harness Stretch, Deceleration Distance and Safety Factor.

Not approved for free falls greater than 2 feet.



INSPECTION AND MAINTENANCE



WARNING!

If inspection reveals any defect, inadequate maintenance, or unsafe condition, remove from service until a “competent person”, as defined by OSHA 29 CFR 1910.140(b) and 1926.32(f), can determine the need for authorized repair or disposal.



WARNING!

Any equipment that has been subjected to the forces of arresting a fall, or that has a deployed load indicator, must be removed from service until a “competent person” can determine the need for authorized repair or disposal.

FREQUENCY

All components must be inspected prior to each use and annually by an OSHA defined “competent person” other than the user. Local, state, governmental and jurisdictional agencies governing occupational safety may require the user to conduct more frequent or mandatory inspections.

CRITERIA

All components and subsystems must be inspected. See user instructions supplied with the product for inspection criteria.

All markings must be legible and attached to the product.

Each leg must be able to lock in place at the head of the Tripod with the locking pin. Each leg must be straight and able to lock into place with the locking pin when extended. The foot on each leg must pivot freely and have the rubber skid pads attached. The head of the Tripod including the eye bolt and the safety chain must be free of damage.

Exposed red on the 3-Way SRL-R snap hook is the indicator that the SRL has been subjected to the forces of arresting a fall. Remove from service and send back to Werner Co. or authorized service

center for inspection and repair.

All equipment must be free of corrosion, chemical attack, alteration, excessive heating or wear.

All snap hooks and carabiners must be able to self-close and lock. All hardware must be free of cracks, sharp edges, deformation, corrosion, or any evidence of defect.

Check the operation of the 3-Way SRL-R by pulling smoothly on the lifeline, then pulling sharply on the lifeline to engage the locking mechanism. Unit must not slip when locked.

The 3-Way SRL-R housing must be free from cracks, distortion or any other damage.

3-Way SRL-R cable must be inspected for kinks, broken strands, corrosion, abrasion, or other signs of wear and/or damage. Swaged terminations must be secure with the thimble tight and no visible damage.

3-Way SRL-R INSPECTION FREQUENCY CHART

In addition to before use inspections, the following chart provides guidance for the frequency of 3-Way SRL-R inspection based upon application, storage, and use conditions.

Type Of Use	Application Examples	Conditions Of Use	Inspection Frequency Competent Person
Infrequent to Light	Rescue and confined space, factory maintenance	Good storage conditions, indoor or infrequent outdoor use, room temperature, clean environments	Annually
Moderate to Heavy	Transportation, residential construction, utilities, warehouse	Fair storage conditions, indoor and extended outdoor use, all temperatures, clean or dusty environments	Semi-annually to annually
Severe to Continuous	Commercial construction, oil and gas, mining	Harsh storage conditions, prolonged or continuous outdoor use, all temperatures, dirty environments	Quarterly to semi-annually

CLEANING AND STORAGE

CLEANING

Cleaning maintenance may be performed by the user. The Tripod System and outside of 3-Way SRL-R and cable may be wiped down with a mild detergent and clean water solution and rinsed with a dampened clean cloth to remove detergent. The hardware can also be wiped down to remove grease or dirt with a clean dry cloth.

MAINTENANCE

**WARNING!**
Only WernerCo, or persons or entities authorized in writing by WernerCo, shall make repairs or alterations to the equipment.

The Tripod System and 3-Way SRL-R requiring maintenance must be tagged “unusable” and removed from service. Do not use any system that requires maintenance.

Snap hooks may require periodic lubrication. Do not apply oil, grease, or other contaminants on the webbing or cable. Use a dry lubricant that has proper resistance to temperature extremes, moisture, and corrosion. Do not over-lubricate.

STORAGE

The Tripod System and 3-Way SRL-R should be stored in a cool, dry place out of direct sunlight when not in use. Do not store where damage from environmental factors such as heat, light, excessive moisture, oil, chemicals and their vapors, or other degrading elements may be present.

